

Test Report

No. SH9084016/CHEM

Date: May. 7, 2009

Page 1 of 7

SUZHOU BLOIT PRINTING INK CO., LTD
NO.888 TONGCHENG ROAD, WEITANG TOWN, XIANGCHENG, SUZHOU

The following sample(s) was/were submitted and identified by/on behalf of the client as:

Sample Name : HIGH GLOSS AND QUICK SETTING OFFSET INK BJ-YELLOW
SGS Ref No. : SUZ11813215-3
Main Substance : PIGMENTS, RESIN

Sample Receiving Date : Jan.14, 2009
Testing Period : Jan.14-19, 2009

Test Requested : (1) In accordance with the RoHS Directive 2002/95/EC, and its amendment directives.
(2) To determine the PFOS (Perfluorooctane Sulfonates) content of the submitted samples.
(3) To determine the Halogen- Fluorine, Chlorine, Bromine, Iodine Content in the submitted sample.

Test Method /Test Results : Please refer to next pages

Signed for and on behalf of
SGS-CSTC Chemical Laboratory



Sandy Hao
Lab Manager

This document is issued by the Company under its General Conditions of Service printed overleaf or available on request and accessible at http://www.sgs.com/terms_and_conditions.htm. Attention is drawn to the limitation of liability, indemnification and jurisdiction issues defined therein. Any holder of this document is advised that information contained hereon reflects only the findings at the time of its intervention only and within the limits of Client's instructions, if any. The Company's sole responsibility is to its Client and this document does not exonerate parties to a transaction from exercising all their rights and obligations under the transaction documents. Any unauthorized alteration, forgery or falsification of the content or appearance of this document is unlawful and offenders may be prosecuted to the fullest extent of the law. Unless otherwise stated the results shown in this test report refer only to the sample(s) tested. This document cannot be reproduced except in full, without prior approval of the Company.

Test Method : (1-1) With reference to IEC 62321/2nd CDV (111/95/CDV) for Cadmium content. Analysis was performed by ICP.
 (1-2) With reference to IEC 62321/2nd CDV (111/95/CDV) for Lead content. Analysis was performed by ICP.
 (1-3) With reference to IEC 62321/2nd CDV (111/95/CDV) for Mercury content. Analysis was performed by ICP.
 (1-4) With reference to IEC 62321/2nd CDV (111/95/CDV) for Hexavalent Chromium by Colorimetric Method.
 (1-5) With reference to IEC 62321/2nd CDV (111/95/CDV) for PBBs / PBDEs content. Analysis was performed by GC/MS.
 (2) With reference to EPA 3550C: 2007. Analysis was performed by High Performance Liquid Chromatograph-Mass Spectrometer (HPLC-MS).
 (3) With reference to EN 14582: 2007.
 (3-1) Determination of Fluorine by Ion Chromatograph (IC) method.
 (3-2) Determination of Chlorine by Ion Chromatograph (IC) method.
 (3-3) Determination of Bromine by Ion Chromatograph (IC) method.
 (3-4) Determination of Iodine by Ion Chromatograph (IC) method.

Test results by chemical method (Unit: mg/kg)

(1) Cadmium, Lead, Mercury, Hexavalent Chromium, PBBs (Polybrominated biphenyls) and PBDEs (Polybrominated biphenyl ethers) Content

Test Item(s):	Method (refer to)	1	MDL	RoHS Limit
Cadmium (Cd)	(1-1)	ND	2	100
Lead (Pb)	(1-2)	ND	2	1000
Mercury (Hg)	(1-3)	ND	2	1000
Hexavalent Chromium (CrVI)	(1-4)	ND	2	1000
Sum of PBBs	(1-5)	ND	-	1000
Monobromobiphenyl		ND	5	-
Dibromobiphenyl		ND	5	-
Tribromobiphenyl		ND	5	-
Tetrabromobiphenyl		ND	5	-
Pentabromobiphenyl		ND	5	-
Hexabromobiphenyl		ND	5	-
Heptabromobiphenyl		ND	5	-
Octabromobiphenyl		ND	5	-
Nonabromobiphenyl		ND	5	-
Decabromobiphenyl		ND	5	-
Sum of PBDEs		ND	-	1000
Monobromodiphenyl ether		ND	5	-
Dibromodiphenyl ether		ND	5	-
Tribromodiphenyl ether		ND	5	-

This document is issued by the Company under its General Conditions of Service printed overleaf or available on request and accessible at http://www.sgs.com/terms_and_conditions.htm. Attention is drawn to the limitation of liability, indemnification and jurisdiction issues defined therein. Any holder of this document is advised that information contained hereon reflects the Company's findings at the time of its intervention only and within the limits of Client's instructions, if any. The Company's sole responsibility is to its Client and this document does not exonerate parties to a transaction from exercising all their rights and obligations under the transaction documents. Any unauthorized alteration, forgery or falsification of the content or appearance of this document is unlawful and offenders may be prosecuted to the fullest extent of the law. Unless otherwise stated the results shown in this test report refer only to the sample(s) tested. This document cannot be reproduced except in full, without prior approval of the Company.



Tetrabromodiphenyl ether		ND	5	-
Pentabromodiphenyl ether		ND	5	-
Hexabromodiphenyl ether		ND	5	-
Heptabromodiphenyl ether		ND	5	-
Octabromodiphenyl ether		ND	5	-
Nonabromodiphenyl ether		ND	5	-
Decabromodiphenyl ether		ND	5	-

(2) PFOS (Perfluorooctane Sulfonates) content

<u>Test Items</u>	<u>Test method</u> (refer to)	<u>1</u>	<u>MDL</u>
Perfluorooctane Sulfonates (PFOS) PFOS – Acid PFOS – Metal Salt PFOS – Amide	(2)	ND	10

Reference Information: Directive 2006/122/EC

- (i) May not be placed on the market or used as a substance or constituent of preparations in a concentration equal to or higher than 0,005 % by mass.
- (ii) May not be placed on the market in semi-finished products or articles, or parts thereof, if the concentration of PFOS is equal to or higher than 0,1 % by mass calculated with reference to the mass of structurally or microstructurally distinct parts that contain PFOS or, for textiles or other coated materials, if the amount of PFOS is equal to or higher than 1 $\mu\text{g}/\text{m}^2$ of the coated material.

(3) Halogen Content

<u>Test Item(s):</u>	<u>Method</u> (refer to)	<u>1</u>	<u>MDL</u>
Fluorine(F)	(3-1)	158	50
Chlorine(Cl)	(3-2)	11504	50
Bromine(Br)	(3-3)	ND	50
Iodine(I)	(3-4)	ND	50

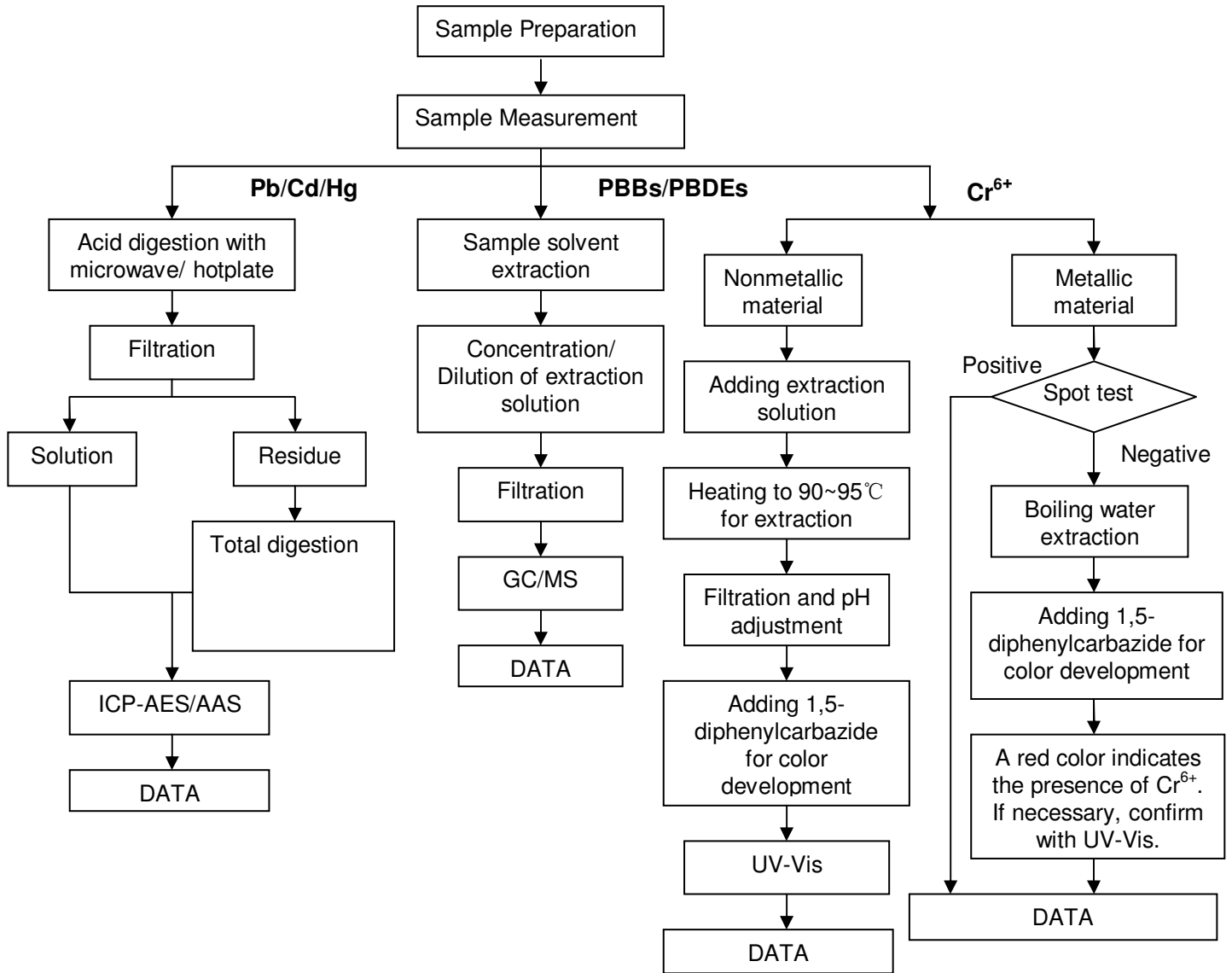
Test Part Description:
1. Yellow ink
Note:

- (1) mg/kg = ppm
- (2) ND = Not Detected
- (3) MDL = Method Detection Limit
- (4) The exemption of DecaBDE in polymeric application according 2005/717/EC was overruled by the European Court of Justice by its decision of 01.04.2008. Subsequently DecaBDE will be included in the sum of PBDE after 01.07.2008.
- (5) “-” = Not Regulated
- (6) The maximum permissible limit is quoted from the document 2005/618/EC amending RoHS directive 2002/95/EC
- (7) The test results are taken from report SH9007645/CHEM, Date: 2009/01/19.

This document is issued by the Company under its General Conditions of Service printed overleaf or available on request and accessible at http://www.sgs.com/terms_and_conditions.htm. Attention is drawn to the limitation of liability, indemnification and jurisdiction issues defined therein. Any holder of this document is advised that information contained hereon reflects the Company's findings at the time of its intervention only and within the limits of Client's instructions, if any. The Company's sole responsibility is to its Client and this document does not exonerate parties to a transaction from exercising all their rights and obligations under the transaction documents. Any unauthorized alteration, forgery or falsification of the content or appearance of this document is unlawful and offenders may be prosecuted to the fullest extent of the law. Unless otherwise stated the results shown in this test report refer only to the sample(s) tested. This document cannot be reproduced except in full, without prior approval of the Company.

ATTACHMENTS

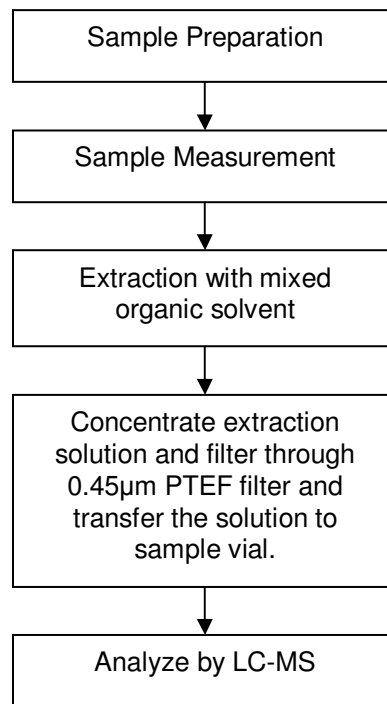
- 1) Name of the person who made measurement: Jeff Zhang/Chaven Lian/Frank Fang/Elim Lin
- 2) Name of the person in charge of measurement: Terry Wang/Phoebe Shen
- 3) These samples were dissolved totally by pre-conditioning method according to below flow chart. (Cr⁶⁺ and PBBs/PBDEs test method excluded)



This document is issued by the Company under its General Conditions of Service printed overleaf or available on request and accessible at http://www.sgs.com/terms_and_conditions.htm. Attention is drawn to the limitation of liability, indemnification and jurisdiction issues defined therein. Any holder of this document is advised that information contained hereon reflects the Company's findings at the time of its intervention only and within the limits of Client's instructions, if any. The Company's sole responsibility is to its Client and this document does not exonerate parties to a transaction from exercising all their rights and obligations under the transaction documents. Any unauthorized alteration, forgery or falsification of the content or appearance of this document is unlawful and offenders may be prosecuted to the fullest extent of the law. Unless otherwise stated the results shown in this test report refer only to the sample(s) tested. This document cannot be reproduced except in full, without prior approval of the Company.



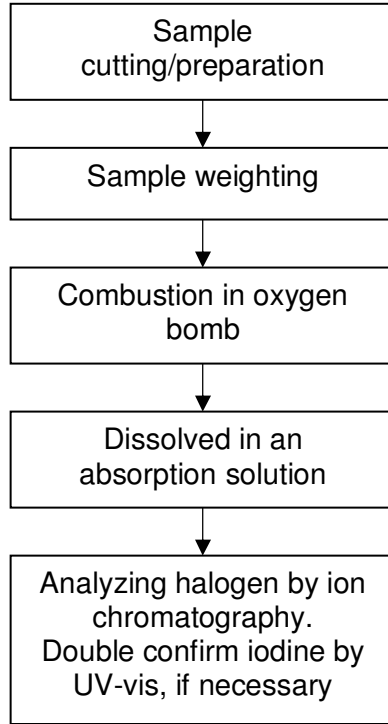
PFOS Measurement Flowchart for sample



Tested by : Judy Li
 Checked by : Jenny Liu

This document is issued by the Company under its General Conditions of Service printed overleaf or available on request and accessible at http://www.sgs.com/terms_and_conditions.htm. Attention is drawn to the limitation of liability, indemnification and jurisdiction issues defined therein. Any holder of this document is advised that information contained hereon reflects the findings at the time of its intervention only and within the limits of Client's instructions, if any. The Company's sole responsibility is to its Client and this document does not exonerate parties to a transaction from exercising all their rights and obligations under the transaction documents. Any unauthorized alteration, forgery or falsification of the content or appearance of this document is unlawful and offenders may be prosecuted to the fullest extent of the law. Unless otherwise stated the results shown in this test report refer only to the sample(s) tested. This document cannot be reproduced except in full, without prior approval of the Company.

Halogen Measurement Flowchart for sample



Tested by : Daisy Gong
 Checked by : Alex Jiang

This document is issued by the Company under its General Conditions of Service printed overleaf or available on request and accessible at http://www.sgs.com/terms_and_conditions.htm. Attention is drawn to the limitation of liability, indemnification and jurisdiction issues defined therein. Any holder of this document is advised that information contained hereon reflects the Company's findings at the time of its intervention only and within the limits of Client's instructions, if any. The Company's sole responsibility is to its Client and this document does not exonerate parties to a transaction from exercising all their rights and obligations under the transaction documents. Any unauthorized alteration, forgery or falsification of the content or appearance of this document is unlawful and offenders may be prosecuted to the fullest extent of the law. Unless otherwise stated the results shown in this test report refer only to the sample(s) tested. This document cannot be reproduced except in full, without prior approval of the Company.

Sample photo:



SGS authenticate the photo on original report only

*** End of Report ***

This document is issued by the Company under its General Conditions of Service printed overleaf or available on request and accessible at http://www.sgs.com/terms_and_conditions.htm. Attention is drawn to the limitation of liability, indemnification and jurisdiction issues defined therein. Any holder of this document is advised that information contained hereon reflects the Company's findings at the time of its intervention only and within the limits of Client's instructions, if any. The Company's sole responsibility is to its Client and this document does not exonerate parties to a transaction from exercising all their rights and obligations under the transaction documents. Any unauthorized alteration, forgery or falsification of the content or appearance of this document is unlawful and offenders may be prosecuted to the fullest extent of the law. Unless otherwise stated the results shown in this test report refer only to the sample(s) tested. This document cannot be reproduced except in full, without prior approval of the Company.

